

**RANGE**

# **MLA & MLA-T**

Articulated loaders



# Handling your world

Founded over 60 years ago by the Braud family, the Manitou Group now operates worldwide. A world-leader in all-terrain material handling, the Group designs, manufactures, distributes and services equipment for construction, agriculture and industries.

The Group's product ranges include: all-terrain fixed, rotating and heavy-load telehandlers; all-terrain, semi-industrial and industrial masted forklift trucks; wheel or track skid-steer loaders; articulated loaders; access platforms; truck-mounted forklifts; warehousing equipment; and attachments.

Through its iconic brands - Manitou, Gehl and Mustang by Manitou- and its worldwide network of 1,050 dealers, the Group offers the best solutions to create optimum value for its customers.

Headquartered in France, the Group registered a revenue in 2021 of 1.9 billion euros in 140 countries and employs 4,500 people, all strongly focused on satisfying customers.

**2 brands**

distributed by  
1,050 dealers  
in 140 countries





Up to **5.20m** lifting height\*<sup>1</sup>

Up to **4978kg** static tipping load

Up to **143hp** engine power

Up to **40 km/h**



**MLA**  
Articulated Loader with z-bar linkage\*<sup>2</sup>

**MLA-T**  
Articulated loader with telescope\*<sup>3</sup>



\*<sup>1</sup> Max. lift height with pallet trucks  
\*<sup>2</sup> on MLA 5-60 H-Z, MLA 6-65 H-Z, MLA 7-75 H-Z.  
\*<sup>3</sup> on MLA-T 533-145 V+.

# COMFORT

A PLEASANT WORKING ENVIRONMENT



## You will feel good

- Adjustable door opening
- Adjustable steering column\*1
- Adjustable operator seat
- Adjustable armrest
- Flat floor for optimal leg room
- 12V plug
- Multi-function joystick

## Easy entry

The wide door(s) opening and the anti-slip step(s) are perfectly adapted to frequent entry and exit of the operator station.



## 360° visibility

The central cab location, the sloping rear bonnet and the 4 work lights give the operator 360° visibility, night and day. The high-mounted seat provides an excellent vantage point to the attachment.

## You have the choice

Depending on the model, you can choose between different types of driving positions :

- 4-post open canopy\*1
- Enclosed cab: supplied as standard with heating\*2

\*1 on models MLA 6-65 H-Z, MLA 7-75 H-Z

\*2 All models

# PERFORMANCE

ALL TERRAIN MANOEUVRABILITY



## Visibility

The design of the bonnet allow a better visibility at the rear of the machine. No debris or materials can remain on the bonnet.

## 45° articulation

The excellent turning radius optimises cycle times and enables the machine to work in the most confined spaces. No need for complicated manoeuvres, a turn of the wheel is all that is needed to pick up your load!

## Boom suspension (optional)

This system absorbs the shocks when driving with or without a load. The components are put under less strain, your load is protected and drive comfort is ensured.

## Differential lock on front and rear axles\*1

Maximum traction, even on muddy ground.

**High ground clearance**  
(Up to 39 cm)

**Agricultural profile tyres**

**4 wheel drive**

## Oscillation\*2

Even on rough terrain, the oscillation allows tyre to ground contact to be maintained at all times.

**Mudguards**

\*1 Except on MLA-T 533-145 V+ (Front axle only)

\*2 Located on the articulation, except on the MLA-T 533-145 V+ (on rear axle).

## Transmission adapted to your working environments

### Hydrostatic transmission\*1

The hydrostatic transmission enables you to adapt the travel speed up to 30 km/h\*2 and to adapt the tractive effort according to the task. Choose your speed with a simple push directly from the joystick. Precision and tractive power: the hydrostatic transmission guarantees smooth handling.

\*1 On all models except MLA-T 533-145 V+

\*2 Optional depending on models

### M-Vario Plus transmission

The MLA-T 533-145 V+ benefits from a more efficient transmission with the continuous variable transmission (CVT). This one consists of 2 hydraulic motors powered by a hydraulic pump. This allows the operator to easily reach 40 km/h.



MLA-T 533 + P2BG Bale clamp

### Inching feature

This function combines low speed approach with fast hydraulic movements, perfect for bale stacking.



MLA-T 533 + P2BG Bale clamp

### Vari drive

With the use of the accelerator pedal, the user can adjust his moving speed independently from the engine RPM set by the hand throttle.



MLA 5 + SCA sweeper



MLA 7+ Bucket BS

# PERFORMANCE

OUR SOLUTIONS FOR  
YOUR DAILY WORK

## Robust design

Built with robustness in mind, all manitou articulated loaders include the following features:

- Central articulation locking bar (for transport)
- Rops / fops\*<sup>1</sup>compliant work station
- Road lights\*<sup>2</sup> recessed into counterweight or bumper

\*<sup>1</sup> Rollover protection systems / Falling object protection systems.

\*<sup>2</sup> Standard on MLA-T 533-145 V+. Optional on the other models.

## Manual reversing fan\*<sup>3</sup>

When the automatic reversing fan function is engaged, the fan can be temporarily reversed to eject debris from the coolers. Cooling is always optimal, especially in very dusty environments such as straw and chicken manure handling.

\*<sup>3</sup> Standard on MLA 6-65 H-Z, MLA 7-75 H-Z.

# COST EFFICIENCY

OUR PRIORITY: MAKING YOUR LIFE EASIER

## ECO MODE\*

The engine speed is optimised while guaranteeing high performances. Fuel consumption and sound pollution are greatly reduced.

\*Only available on MLA-T 533-145 V+

## Intelligent maintenance

The dashboard screen notifies the driver of possible errors. It gives your dealer useful information to rapidly intervene.



## Easy access to the main components

Because you have no time to lose, we have engineered the MLA to make maintenance easy:

- Wide engine hood opening
- Removable side panels\*<sup>2</sup>
- Centralized position of greasing points

\*<sup>2</sup> On models MLA 6-65 H-Z, MLA 7-75 H-Z.



# THINK TCO

## Manitou is committed to reducing your total cost of ownership (TCO)

The engine speed is optimised here ensuring high performance. Fuel consumption and noise levels are significantly reduced.

### ECO-STOP\*

The optional ECOSTOP system limits the use of the engine and therefore wear and fuel consumption. The hour meter is based on actual working hours.

### ECO-MODE\*

This standard feature significantly reduces fuel consumption significantly reduce fuel consumption when travelling: the engine speed is automatically adjusted to the automatically to the needs of the transmission needs of the transmission..

\*Only available on the model MLA-T 533-145 V+.

- **Reduced consumption and noise on site**  
Reduced cabin noise and fuel consumption with the new Stage 5 engine. Significant impact on the environment.
- **Easy maintenance**  
Simplified access to maintenance and hydraulic components for reduced service time.
- **Optimize resale value**  
The MLA-MLA-T range brings you a high resale value thanks to its performance, quality and durability of its components.
- **Reduced downtime**  
Hoses hydraulic for easy maintenance and reduced downtime.

# Machine Connectée

## Connected solution

Follow 24H/24 in real time the position of your machine and optimize its operational follow-up.



### Protect your equipment and control access!

As an option, you can manage driving authorizations and control operator access to your machines to ensure their safety and that of the workplace.

- **View in real time**  
Manage your fleet remotely and benefit from a multitude of information on your machines accessible on PC, tablet or smartphone.
- **Anticipate maintenance**  
Save time: share your alerts directly with the technician to anticipate parts and reduce response time.
- **Analyze performance**  
Visualize the performance of your machines in a graphical format that is easy to follow and interpret.

# TECHNICAL DATASHEET



**MLA 5-60 H-Z\***



**MLA 6-65 H-Z\***



**MLA 7-75 H-Z\***



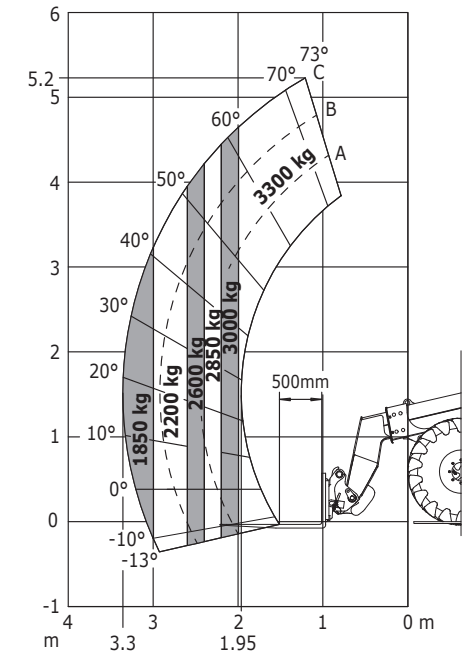
**MLA-T 533-145 V+**

Transmission Type	-	<b>Hydrostatic</b>
Engine power	HP	<b>60</b>
Environmental norm	-	<b>Stage V</b>
Engine brand	-	<b>Deutz</b>
Max. payload with forks as per EN 474-3 (80%)	kg	<b>N/A</b>
Static tipping load with bucket (straight)	kg	<b>2,190</b>
Max. lifting height (below forks)	m	<b>2.97</b>
Max. height of bucket pivot point	m	<b>3.16</b>
Ground clearance	m	<b>0.25</b>
Dimension without attachment (largeurxlongueurxhauteur)	m	<b>1.49x4.18x2.31</b>
Hydraulic pump type	-	<b>Gear pump</b>
Hydraulic flow - Pressure	l/min	<b>58</b>
Unladen weight (with forks)	kg	<b>3,388</b>
Max. travel speed.	km/h	<b>30</b>

<b>Hydrostatic</b>
<b>65</b>
<b>Stage V</b>
<b>Yanmar</b>
<b>N/A</b>
<b>2,907</b>
<b>3.13</b>
<b>3.32</b>
<b>0.37</b>
<b>1.65x4.26x2.47</b>
<b>Gear pump</b>
<b>70</b>
<b>4,150</b>
<b>30</b>

<b>Hydrostatic</b>
<b>74</b>
<b>Stage V</b>
<b>Deutz</b>
<b>N/A</b>
<b>3,378</b>
<b>3.28</b>
<b>3.47</b>
<b>0.31</b>
<b>1.74x4.44x2.48</b>
<b>Gear pump</b>
<b>70</b>
<b>4,781</b>
<b>30</b>

<b>M-Vario Plus</b>
<b>143</b>
<b>Stage V</b>
<b>Deutz</b>
<b>3,300</b>
<b>4,978</b>
<b>5.20</b>
<b>N/A</b>
<b>0.39</b>
<b>2.29x5.72x2.70</b>
<b>Load sensing pump</b>
<b>158</b>
<b>8,430</b>
<b>40</b>



**MLA-T 533-145 V+**  
Following norm EN 474-3 (80%)










\*With canopy 4 points.






# 4 FINISH LEVELS

 **ESSENTIAL**
 **CLASSIC**
 **PREMIUM**
 **ELITE**

s: standard / o: option / no available

	MLA 5-60 H-Z			MLA 6-65 H-Z			MLA7-75 H-Z		
									
<b>General</b>									
Manual hand throttle	S	S	S	S	S	S	S	S	S
Air prefilter	S	S	S	S	S	S	S	S	S
Speed control	O	O	S	O	O	S	O	O	S
Third gear	O	O	S	O	O	S	O	O	S
<b>Comfort</b>									
Canopy	S	-	-	S	-	-	S	-	-
Enclosed cab with heating	-	S	S	-	S	S	-	S	S
Tuner car radio	-	S	S	-	S	S	-	S	S
Bluetooth car radio with integrated microphone	-	-	-	-	-	-	-	-	-
Bluetooth car radio with extra microphone	-	-	-	-	-	-	-	-	-
Adjustable steering column	S	S	S	S	S	S	S	S	S
Air conditioning	-	O	S	-	O	S	-	O	S
Mechanical seat	S	S	-	S	S	-	S	S	-
Air suspension seat	-	O	S	-	O	S	-	O	S
Low frequency air suspension seat	-	-	-	-	-	-	-	-	-
Boom suspension	O	O	S	O	O	S	O	O	S
Floor mat	S	S	S	S	S	S	S	S	S
<b>Electricity/Safety</b>									
Complete road lights	O	S	S	O	S	S	O	S	S
Rotating beacon	O	O	O	O	O	O	O	O	O
Front and rear work lights on cab (x4)	S	S	-	S	S	-	S	S	-
Front and rear LED work lights on cab (x4)	O	O	S	O	O	S	O	O	S
Electric mirrors with de-icing	-	-	-	-	-	-	-	-	-
<b>Hydraulics</b>									
Attachment hydraulic line	S	S	S	S	S	S	S	S	S
Easy Connect System (ECS)	S	S	S	S	S	S	S	S	S
Attachment hydraulic locking	S	S	S	S	S	S	S	S	S
Continuous flow hydraulics	S	S	S	S	S	S	S	S	S
Intelligent Hydraulics	-	-	-	-	-	-	-	-	-
Regenerative Hydraulics	-	-	-	-	-	-	-	-	-

MLA-T 533-145 V+		
		
S	S	S
S	S	S
S	S	S
-	-	-
-	-	-
S	S	S
S	-	-
O	S	-
O	O	S
S	S	S
O	S	S
S	-	-
O	S	-
O	O	S
O	O	S
S	S	S
S	S	S
S	-	-
O	S	S
O	O	S
S	S	S
S	S	S
S	-	-
O	S	S
O	O	S
S	S	S
S	S	S
S	-	-
O	S	S
O	O	S
O	O	S
O	S	S

**Full range of tyres**

You can choose between different tyre treads, brands and dimensions so that it is completely customised to your environment.



**Width machines with tyres**

	15.5/55-17	425/55 R17	33 x 15,5 - 16,5	12 - 16,5	405/70 - 20	500 / 45 - 20	600 / 40 - 22,5	460/70 R24	500/70 R24
<b>MLA 5-60 H-Z</b>	1492 mm	1530 mm	1435 mm	1292 mm					
<b>MLA 6-65 H-Z</b>					1845 / 2017 mm	1788 / 2012 mm			
<b>MLA 7-75 H-Z</b>					1736 / 1957 mm	1834 / 1983 mm	2022 mm		
<b>MLA-T 533-145 V+</b>								2290 mm	2350 mm
<b>Profile</b>	AG profile	AG profile	SL profile	SL profile	AG profile or Industrial profile	AG profile	AG profile	AG profile or Industrial profile	AG profile or Industrial profile

# HOMOLOGATED ATTACHMENTS



## Attachments can be changed in seconds

With the Manitou hook-up system, you can change attachments in just a few seconds. The ECS (Easy Connect System) decompresses the hydraulic attachment line without turning off the engine, making it quick and easy to change your hydraulic attachments.

## Attachment hydraulic locking

(In option on MLA-T 533-145 V+ model)

The attachment hydraulic locking allows you to change and lock the attachment without leaving the cab.



### Grain buckets

Designed for all non-coherent materials with a density of less than 1000 kg/m<sup>3</sup>: grain, mineral feed, poultry manure etc.



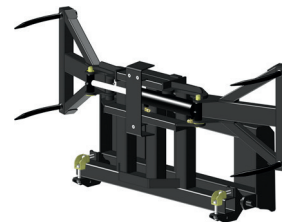
### Standard buckets

The universal bucket for all heavy bulk materials. Available with optional teeth or bolt-on wear plate \*1.



### Grapple buckets

The "must have" attachment for feed, silage and manure handling.



### Round bale clamps

Powerful and rugged clamps for all round bales. Can also handle square ones \*1.



### Wrapped bale clamps

For handling both round and square bales, the perfect solution to move bales without film damage - hence ensuring optimal profitability \*1.



### Bale forks

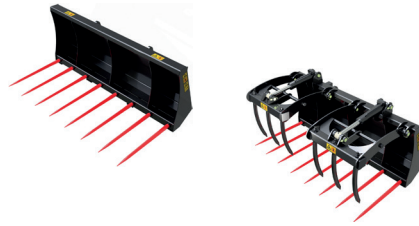
Simple and efficient bale handling solutions

\*1 Subject to compatibility limitations. Check with your Manitou dealer.



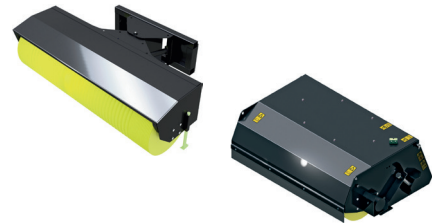
**4 in 1 buckets**

Load, dig and push with one single attachment. Available with and without teeth



**Farm forks and grabs**

Attachments dedicated to the handling of heavy, compact manure. Can also be used for silage pit preparation and occasional bale handling \*1.



**Sweepers**

To keep your farm yard clean.



**Snow and dozer blades**

Whatever the material, our blades will offer competitive solutions and make work easy.

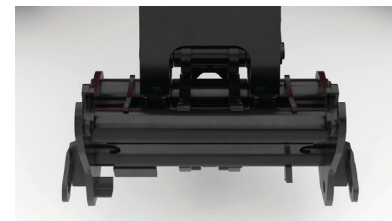
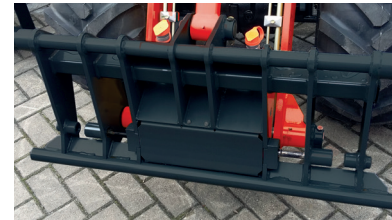
**Versatility**

Your daily operations are characterized by a great diversity. The articulated loader range offers much versatility with a wide range of attachments: moving grain, stacking hay bales, cleaning the yard, removing snow...

**Choose between a full range of attachment carriages**

- Manitou attachment carriage
- Manitou attachment carriage
- 4-point attachment carriage\*1
- Power-A-Tach attachment carriage\*1
- Euro 8 attachment carriage\*1
- Pin&Cone attachment carriage \*2

\*1 All models available, except on the MLA-T 533-145 V+.  
\*2 On MLA-T 533-145 V+ only



Your dealer:



Head office

B.P. 249 - 430 rue de l'Aubinière - 44158 Ancenis Cedex - France

Tel.: 00 33 (0)2 40 09 10 11 - Fax: 00 33 (0)2 40 09 10 97



This publication provides the description of the versions and configuration possibilities of Manitou products, which may differ in terms of equipment. The equipment presented in this brochure may be available as part of a series, available as an option, or not available, depending on the versions. Manitou reserves the right, at any time and without notice, to amend the specifications described and represented. The specifications provided do not bind the manufacturer. For more details, please contact your Manitou agent. This is not a contractually binding document. The presentation of the products is not contractually binding. The list of specifications is non-exhaustive. The logos and visual identity of the company are the property of Manitou and cannot be used without authorisation. All rights are reserved. The photos and diagrams in this brochure are only provided for consultation and information purposes. Manitou BF SA - Limited company with board of directors. Share capital: 39,668,399 euros - 857 802 508 RCS Nantes